



MONTHLY MEMBERSHIP PROGRESS REPORT

District 323 G1

Results as of: 5/31/2015

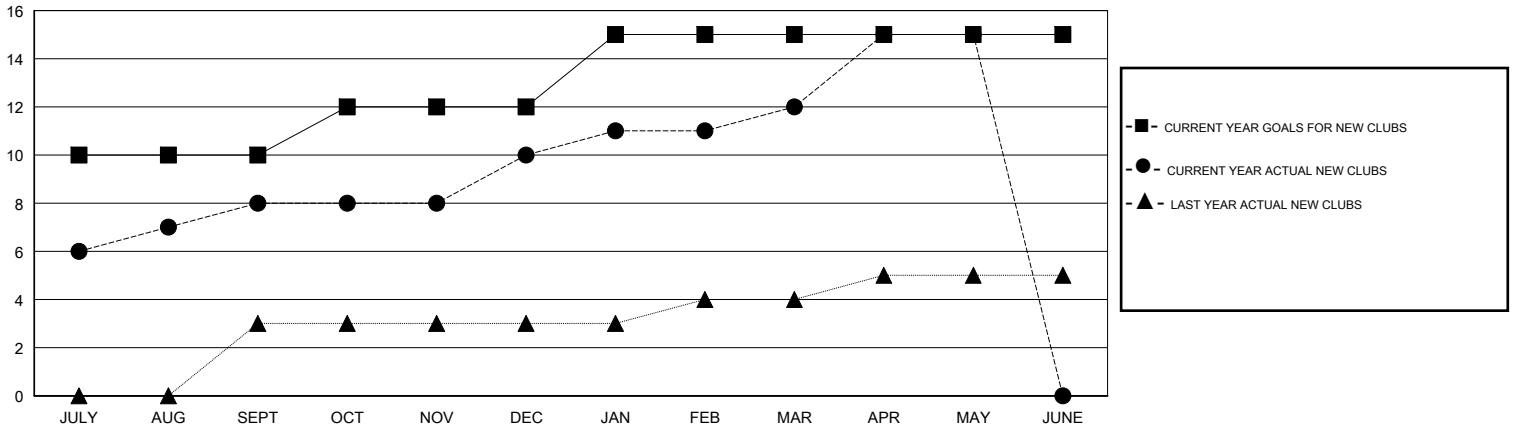
GMT: KAMLESH JAIN

LOCATION INDIA

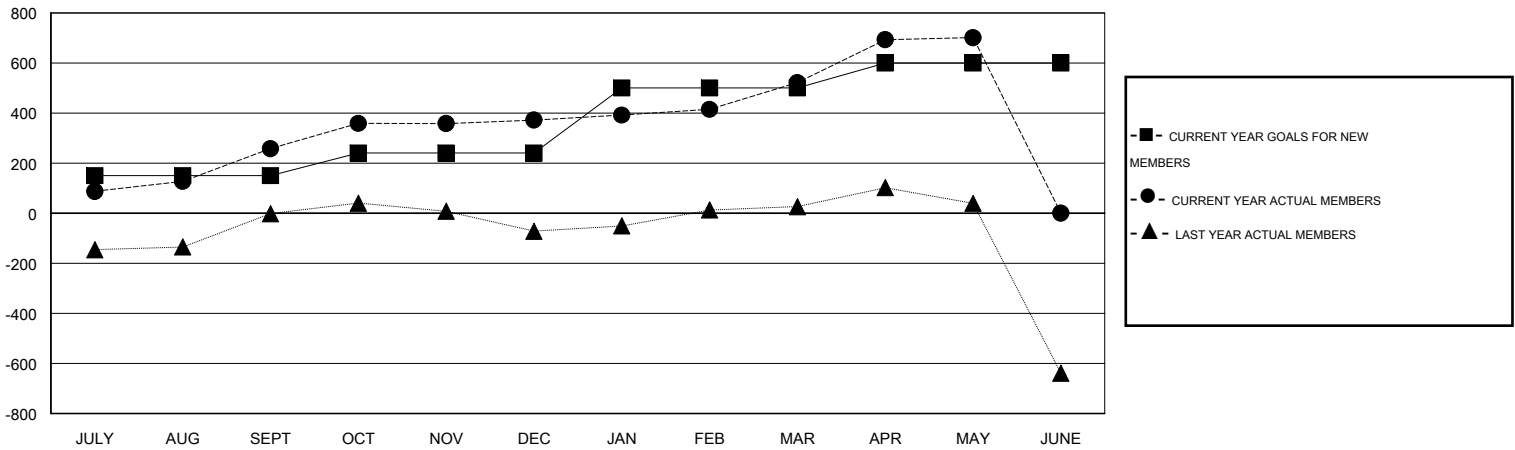
GMT CA 6

Clubs					Members				
RESULTS FOR 2014-2015					RESULTS FOR 2014-2015				
QUARTER	NEW CLUB GOAL	NEW CLUBS	DROPPED CLUBS	NET GAIN/LOSS	QUARTER	NEW MEMBER GOAL	CHARTER AND NEW MEMBERS ADDED	DROPPED MEMBERS	NET GAIN/LOSS
JULY/AUG/SEPT	10	8	0	8	JULY/AUG/SEPT	150	343	85	258
OCT/NOV/DEC	2	2	0	2	OCT/NOV/DEC	90	177	63	114
JAN/FEB/MAR	3	2	0	2	JAN/FEB/MAR	260	177	27	150
APR/MAY/JUNE	0	3	0	3	APR/MAY/JUNE	100	212	33	179

GOALS AND ACTUAL NEW CLUBS CUMULATIVE



GOALS AND ACTUAL MEMBERS CUMULATIVE



DROPPED CLUBS: 0	124 CLUBS OF 125 ADDED 1 OR MORE NEW MEMBERS	<u>GENDER DISTRIBUTION</u>	
<u>DROPPED MEMBERS</u>		MALE	3,039 (71.91%)
DECEASED	7	FEMALE	1,187 (28.09%)
CLUB CANCELLED	0	FAMILY UNIT MEMBERS 1,403 HEAD OF HOUSEHOLD 621 NON-HEAD OF HOUSEHOLD 782	
OTHER	199		
TOTAL	206		
CLICK HERE FOR HEALTH ASSESSMENT DATA			